



ZYTER THERMAL ALERT



DISTRIBUTED BY:





Established in 2001
Headquartered:
Rockville, MD



Our Services

- Business Transformation
- ADM Services
- NextGen Mobility
- Product Engineering



Why Infinite?

- Strong Domain Knowledge
- Platform based Strategy
- Business Value Led Associations
- Flexible Engagement Models
- Differentiated Income Model
- Long-Term Relationships



7500+
Employees
(Across the globe)



155+
Active customers
(Long Term Relationships with
Fortune 1000 Companies)



780M+
USD
Financials FY 18-19



20
Offices Globally



8
Verticals



6
Global Delivery Centres



Established 2017
Headquarters: Rockville,
MD



7M+ Active Users
45M+ Expected by
2021



Winner of the 2019 IT World Award in the "Hot Technology & Solution of the Year, Information Technology Cloud/SaaS" Category

DISTRIBUTED BY:



MTN EMERGENCY SERVICES

150+ F500 Customers

HEALTHCARE



TELECOM, MEDIA & ENTERTAINMENT, RETAIL, SPORTS



HI-TECH



BFSI



TRANSPORTATION & ENERGY



GOVERNMENT



DISTRIBUTED BY:



MTN EMERGENCY SERVICES

Zyter Credibility



DISTRIBUTED BY:



MTN EMERGENCY SERVICES

- ✓ Currently live at the US Naval Medical Center, San Diego
- ✓ Authority to operate (ATO) at DoD and VA
- ✓ The communication platform underpinning Zyter processes over 500 billion messages a year
- ✓ Contract awarded to expand Zyter platform to 16 US Military Hospitals based on superior performance
- ✓ Zyter solution already live at Federal, Commercial Healthcare, Events & Entertainment and Transportation industries
- ✓ Remote monitoring US Military personnel through integrated Tele-ICU platform
- ✓ Zyter prescreening and virtual care for COVID-19 pandemic containment (*awaiting final approval from DHA)



U.S. Department
of Veterans Affairs



Military Health
System



Naval Medical
Center - SD



NH Camp
Pendleton



Brook Army
Medical Center



Yokota
AFB



NH
Jacksonville



NMC
Camp Lejeune



NH
Guantanamo Bay



Fort Belvoir
CH



General Leonard
Wood ACH



NH
Okinawa



Joint Base
Elmendorf Richardson



Evans
AHC



NH Twentynine
Palms



Weed
ACH



Naval Clinic
Diego Garcia



Madigan
AMC





DISTRIBUTED BY:



MTN EMERGENCY SERVICES

5

I N H O M E M O N I T O R I N G

WHAT ZYTER[®] OFFERS

Hardware agnostic solution supporting secure provider to provider clinical collaboration, integrated clinical and business processes, an enhanced patient and provider care experience, and seamless interoperability to improve care coordination and bring the right provider to the right patient at the right time.



COLLABORATION

keep your providers connected using intelligent chat, crisp audio, and high-definition video calling capabilities.



INTEGRATED PLATFORM

integrate with disparate systems in your IT ecosystem such as different EMRs to create a 360° view of patients and events and a single workspace for your staff to view and add to patient records



MODULAR DESIGN

select which services to use and rehost, refactor, or rationalize legacy workloads onto a singular platform



USER EXPERIENCE

develop a customized user experience to deliver rich features and content through web and mobile applications.



PROACTIVE REMOTE MONITORING

monitoring patients remotely and seamless and convenient proactive treatment through a connected platform.



SECURITY & COMPLIANCE

Device-to-device 256 bit AES encrypted. HIPAA & FedRAMP compliant, DoD / VA ATO

CORE SERVICES



Custom Chat



SMS/MMS



Voice Calls



Video Calls



Secure Cloud



Async Messaging



Geo Location



Broadcasts



Alerts



Campaigns



File Transfers



Authentication



3rd Party APIs



Scheduling

PROVIDER PRODUCTS



TELEHEALTH



NURSING SUITE



IN-HOME CARE



THERMAL ALERT

DISTRIBUTED BY:



MTN EMERGENCY SERVICES

OTHER PRODUCTS



PATIENT 360° EXPERIENCE



PROVIDER CONNECT



CLINICAL CARE



SMART SCREENINGS



HOSPITAL LOGISTICS



PROVIDER-INTEROPERABILITY

DISTRIBUTED BY:



MTN EMERGENCY SERVICES

The Product



A dual spectrum thermal imaging solution with high-accuracy live temperature tracking invisible and thermal spectrum modes



Thermal Imaging

Ability to measure human body temperature of multiple people simultaneously through non-contact monitoring



Multiple Install Options

Setup options include standalone, central or drive-through detection modes (including the ability to connect to customer's network)



User Experience

Smart alerts on monitor, mobile and web – Highly customizable with optical, thermal images and body temperature



Crowd Detection and Distance

Able to detect multiple individuals (up to 10) within the temperature detection zone from a distance of 20 feet away



Military Grade Security

Device-to-device 256-bit AES encrypted. HIPAA, FedRAMP and FISMA compliant DoD / VA Authority to Operate

CORE SERVICES



Custom Chat



SMS/MMS



Voice Calls



Video Calls



Secure Cloud



Async Messaging



Geo Location



Broadcasts



Alerts



Campaigns



File Transfers



Authentication



3rd Party APIs



Scheduling

Thermal Alert™ What Zyter® Offers

A dual spectrum thermal imaging solution with high-accuracy live temperature tracking in visible and thermal spectrum modes



THERMAL
ALERTS



CROWD DETECTION AND
DISTANCE



ALERTS &
NOTIFICATIONS



MILITARY GRADE
SECURITY



MULTIPLE INSTALL
OPTIONS



ACCURACY &
PRIVACY



ANALYTICS &
DASHBOARDS



3RD PARTY
INTEGRATION

ADDITIONAL SOLUTIONS ON BACK-TO-OPERATIONS



DISTRIBUTED BY:



MTN EMERGENCY SERVICES



Product Overview



A dual spectrum thermal imaging solution with high-accuracy live temperature tracking in visible and thermal spectrum modes



SETUP OPTIONS

Setup options include standalone, central or drive-through detection modes. Graphical views can be customized by customer and user groups

TEMPERATURE

Easily capture and track temperatures between 68 F TO 122 F.

ACCURACY

High precision non contact temperature measurement, error $< \pm 0.3$ C or ± 0.55 F

INTUITIVE

High resolution infrared imaging accurately pinpoints people with an abnormal body temperature.

DUAL SENSORS

Intelligent algorithm for visible and thermal imaging camera system with accurate temperature measurement.

SMART ALERTS

Automatic real time alarms and customizable threshold temperature for abnormal body temperature.

LIVE TRACKING

24/7 real time rapid body temperature screening.

EASY DEPLOYMENT

Camera & PC constitutes a small temperature measurement station, supporting offline and online deployment.

ADAPTABILITY

Adaptable to small facilities such as entrances, stores, set up options such as walls and posts and more.

MOUNTING

Tripods and wall mounts are included for floor and wall mounting.

WIDE RANGE

Temperature detection zone is between 6 to 15 feet.

CROWD DETECTION

Able to detect multiple individuals (up to 6) within the temperature detection zone.

NETWORK

IP enabled cameras distribute live feeds via internal network.

SECURITY & PRIVACY

Infrared non contact temperature measurement reduces the risk of cross infection. No personal data /images is collected, distributed or stored.

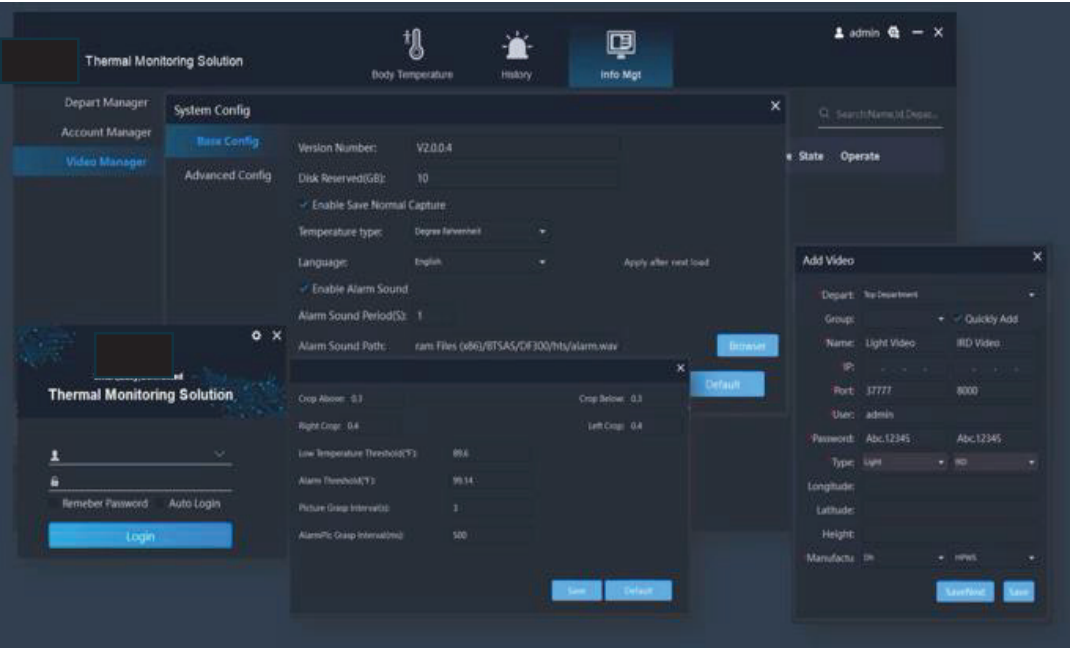
EFFICIENT

Detect multiple people simultaneously with detection time < 1 s.

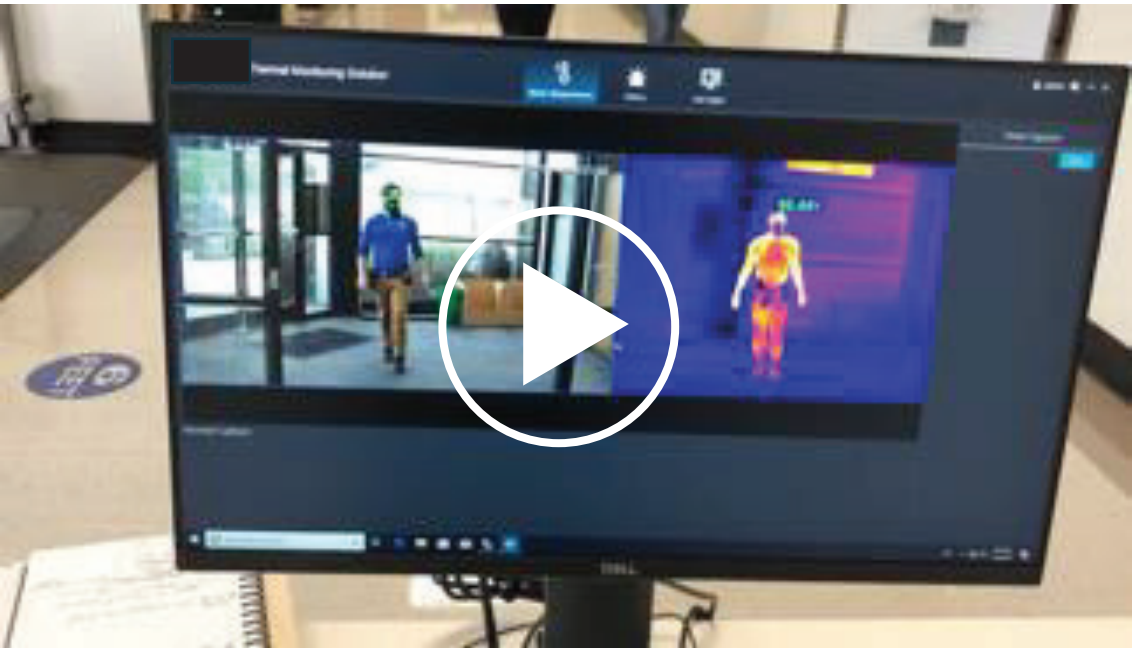
Thermal Imaging Cameras & Platform



Software Interface



Video Example (Movie)



Case Study #1: Large Retail Giant



A Leading American department store chain having 3200+ distribution centers and retail centers across United States.



Solution:
Smart Screening

Thermal Imaging Cameras at the entrance check the temperature providing seamless user experience and enables streamlined non-contact temperature monitoring at scale

Advanced AI-powered analytics integration a broad range of data sources



Customizable to user requirements and diverse user groups

Potential Benefits

Customizable

Customizable to the unique circumstances and specific business requirements

Efficient

Efficient by directing attention and resources where it matters most with efficiency through automation and integration of workflows

Risk aware

Risk aware through AI-powered data analytics to model and assess risks and inform decisions

Case Study #2: Hospital System



A leading clinical research center, hospital and graduate medical school located in California, United States.

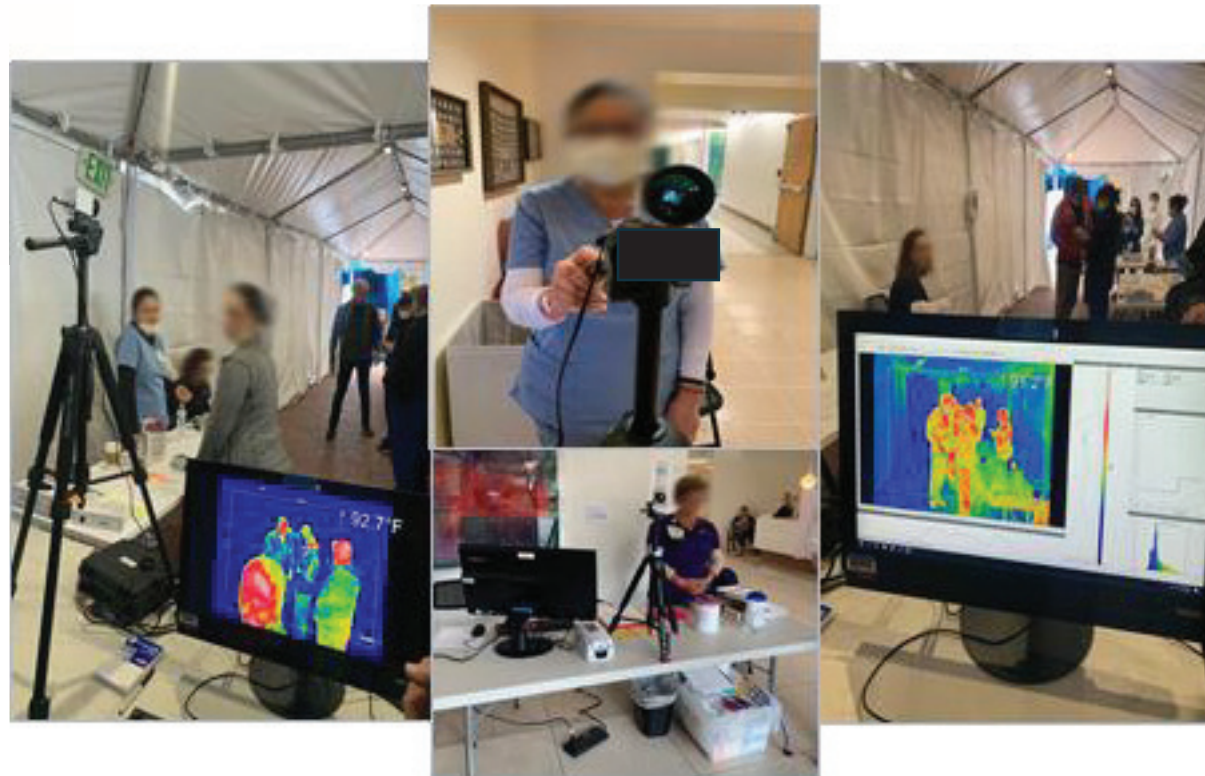


Solution:

Smart Screening & Care
Coordination

Thermal Imaging Cameras mounted at the entrance of the clinic / tents automatically checks the temperatures of the patients / members as they enter into the arena. The solution provides the live screening of the patients on dedicated readers.

Advanced AI-powered analytics integration a broad range of data sources



Potential Benefits

Care Coordination

Triggering alerts to the nursing staff / care team & Emergency virtual care coordination with specialists as required

Efficient

Efficient by directing attention of doctors where it matters most with efficiency through automation and integration of workflows

Data Analysis & Alerts

Thermal camera data analysis and alerts to the emergency response team as required based on the results



THANK YOU

2600 Tower Oaks Blvd,
Rockville, MD 20852, (USA)



(3 0 1) 3 5 5 - 7 7 6 4



s u p p o r t @ z y t e r . c o m



w w w . z y t e r . c o m