

SMART. EASY. CONNECTED

# ZYTER EVENTS

Slide deck featuring Zyter overview, events footprint, Zyter solutions - Event in a box, back-to-operations solutions, case studies & use cases.

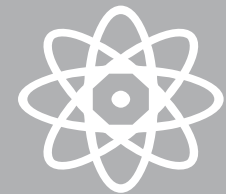
PREVIEW

DISTRIBUTED BY:

MOUNTAIN  
PRODUCTIONS

MTN  
EMERGENCY SERVICES





## Company

Established in 1999  
Headquartered in Rockville, MD



## Our Services

- Business Transformation
- ADM Services
- NextGen Mobility
- Product Engineering



## Why Infinite?

- Strong Domain Knowledge
- Platform based Strategy
- Business Value Led Associations
- Flexible Engagement Models
- Differentiated Income Model
- Long-Term Relationships



**9000+**  
Employees  
(Across the globe)



**150+**  
Active customers  
(Long Term Relationships with  
Fortune 1000 Companies)



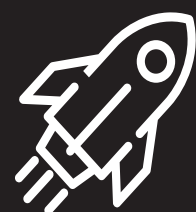
**900M+**  
Million  
Up 13.5% YoY



**20**  
Offices Globally



**8**  
Verticals



**08**  
Global Delivery Centres



## Established 2017

Headquarters: Rockville,  
MD



## 7M+ Active Users

45M+ Expected  
by 2021



*Winner of the 2019 IT World Award in the "Hot Technology & Solution of the Year, Information Technology Cloud/SaaS" Category*



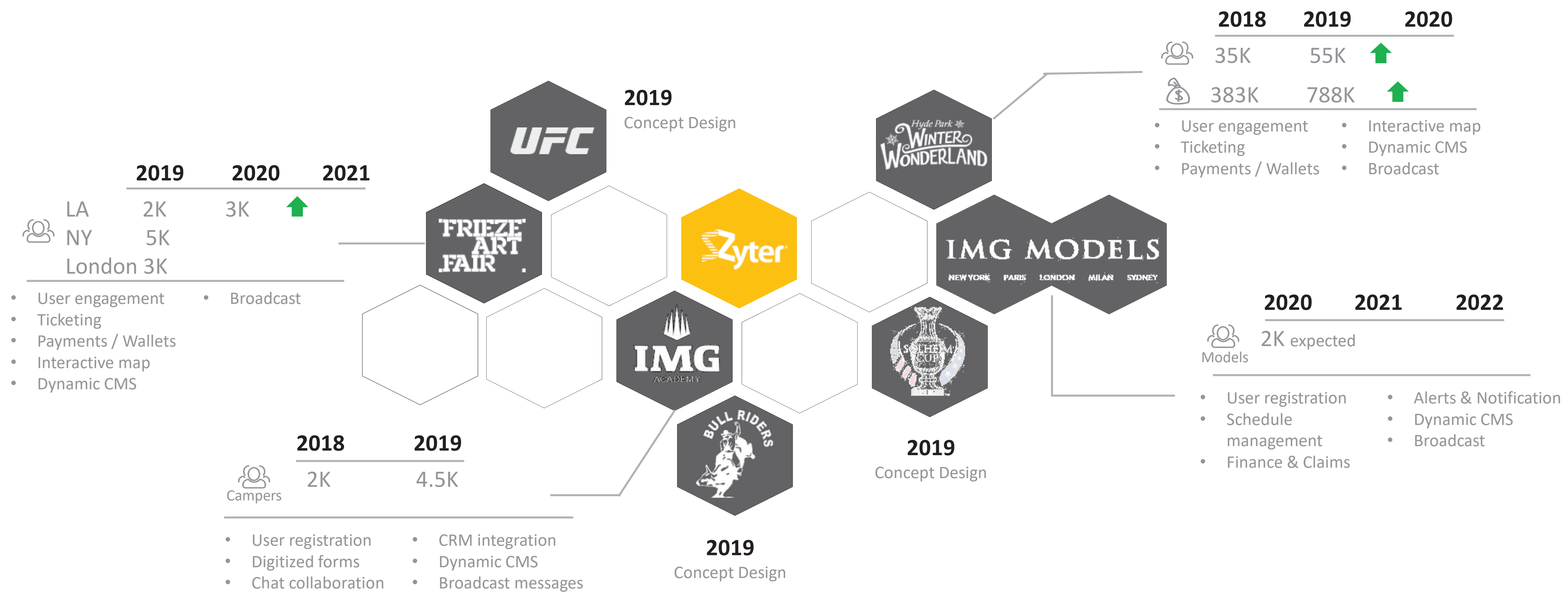
DISTRIBUTED BY:



**MTN** EMERGENCY SERVICES

S M A R T . E A S Y . C O N N E C T E D

# ENDEAVOR FOOT PRINT



S M A R T . E A S Y . C O N N E C T E D

# EVENT IN A BOX



DISTRIBUTED BY:

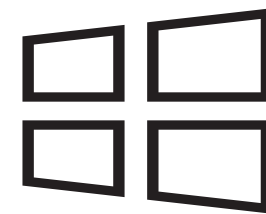


# BACK TO EVENTS

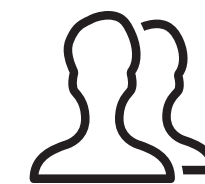
ensuring patrons and employee safety during events, all around



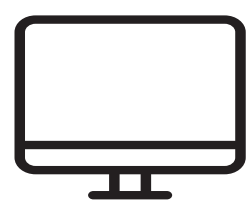
SMART  
SCREENING



THERMAL ALERTS



CONTACT  
TRACING



TOUCHLESS  
KIOSKS/TICKETING

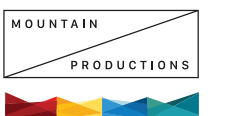


CONTACTLESS  
DINING KITS



CONTENT &  
NOTIFICATION

DISTRIBUTED BY:



**MTN** EMERGENCY SERVICES



Z Y T E R   T H E R M A L   A L E R T ™

# WHAT ZYTER OFFERS

6

●●●● A dual spectrum thermal imaging solution with high-accuracy live temperature tracking in visible and thermal spectrum modes



THERMAL  
ALERTS



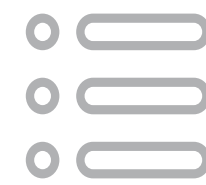
CROWD DETECTION



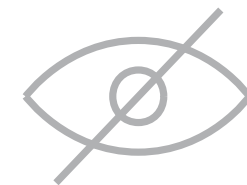
ALERTS &  
NOTIFICATIONS



MILITARY GRADE  
SECURITY



MULTIPLE INSTALL  
OPTIONS



ACCURACY &  
PRIVACY

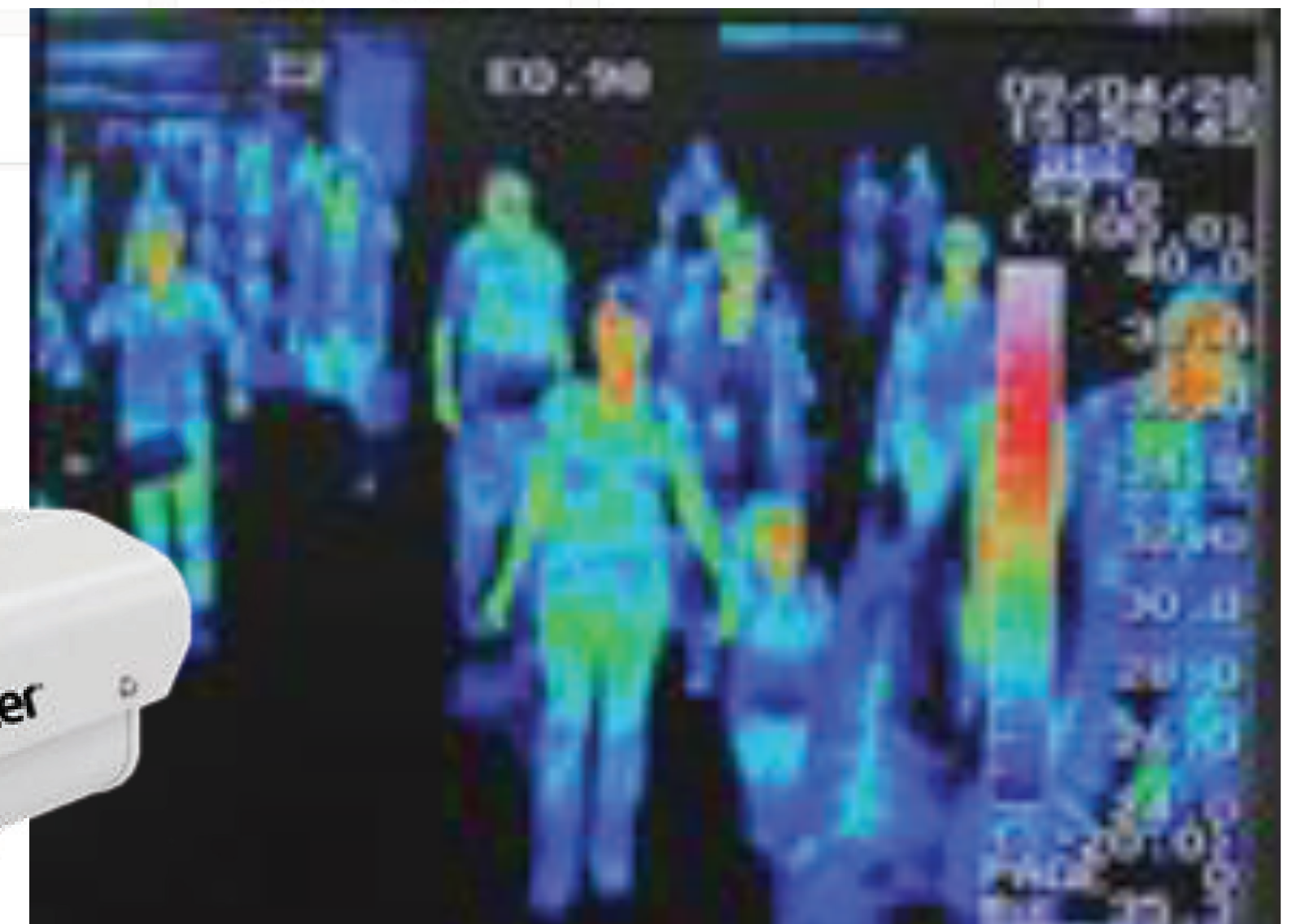
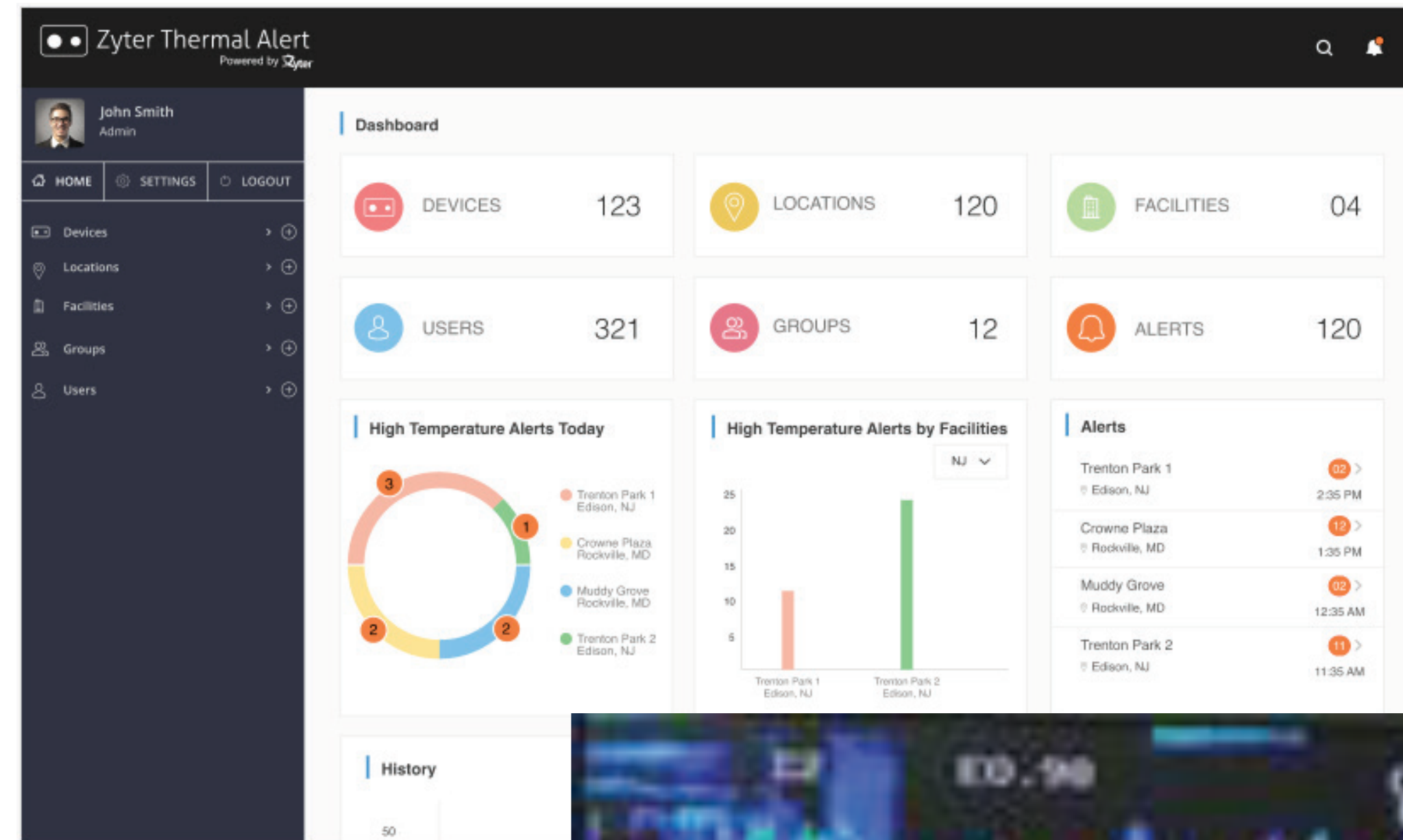


ANALYTICS &  
DASHBOARDS



3RD PARTY  
INTEGRATION

*Additional BACK-TO-WORK solutions available for employee  
DayPass and digital contact tracing.*



B A C K U P   S L I D E S

DISTRIBUTED BY:



**MTN** EMERGENCY SERVICES

# CASE STUDIES

Academy, Hyde Park, Frieze, Models

DISTRIBUTED BY:



**MTN** EMERGENCY SERVICES



# IMG ACADEMY



**8-10K users**  
(Campers & Parents)  
**2018-19**

## REGISTRATION & CHECK-IN

- Digital forms submission
- Online forms verification
- Secure file transfer
- Campus check-in /out
- Health check-in

## COURSE UPDATES

- Academic/training schedule
- Broadcast messages
- Course guides
- Camp survey

## SELF-SERVICE

- Transportation
- Access students bank account
- Request room change
- Access to IMG news and happenings



## MANAGEMENT

- Enrollments & registration
- Broadcasts
- Workflow integration
- Student/parent communication
- Content publishing

## SAFETY & SECURITY

- Alerts & notifications
- One-touch emergency calls
- Campus navigation & Wayfinding

## COMMUNICATION

- One-on-One communication with parents/IMG staff/campers/Coaches
- Camper to camper communication
- Group based conversations
- Balance payment alerts

DISTRIBUTED BY:



## HYDE PARK



**35 K users**  
**12 K Tickets sold**  
**(2018-19)**



**55 K users**  
**28 K Tickets sold**  
**(2019-20)**

## REGISTRATION

- User registration
- Guest user access
- Social media log-in
- User subscriptions
- Access to booking history

## SELF-SERVICE

- Event listing
- Search attractions
- Shopping cart
- Book tickets
- Personalized itinerary
- Mobile wallet

## USER ENGAGEMENT

- Dynamic content publishing
- Marketing updates
- Push notification
- Offers / Coupons
- Interactive maps
- Geo navigation

## PAYMENT MANAGEMENT

- Secured payment gateway (3D Secure)
- Multiple payment options
- Payment history
- Cancel/Refund/Top-up

## ALERTS &amp; NOTIFICATION

- Broadcast messages
- Push notification services
- Reminder alerts

## INTEGRATION &amp; ACCESSABILITY

- Mobile and web access
- Social media integration
- Ticket engine integration
- GDPR, PCI compliance



DISTRIBUTED BY:





# FRIEZE ART FAIRS

LA, NY, LONDON



12K users  
(2018-19)



5K users  
(2019-2)

## ART FAIR

- Public/VIP access
- QR code access to gallery
- Subscription
- Real-time news feeds
- Alerts & Notification

## USER ENGAGEMENT

- Interactive gallery map
- Narrative audio files
- Geo-location
- Push notification
- Social media integration

## CORE FEATURES

- Program calendar
- Program/Events/Gallery listing
- Personalised itinerary
- Scheduled event reminders
- Dynamic content updates
- Mobile wallets

## MANAGEMENT ACTIVITIES

- User data analytics
- Push notification centre
- Dashboard and reports
- Content management system
- Personalised UI themes



DISTRIBUTED BY:



3 K Models  
2020-21

# IMG MODELS

## REGISTRATION

- New model registration
- Model status validation
- User authentication
- Secure document exchange (consent forms, medical report, emergency contacts )

## SELF-SERVICE

- Profile update
- Add associates
- Calendar management
- Dynamic To-Do list
- eSign documents
- Access contracts/Tax forms

## FINANCIALS

- Claims/Expense management
- Billing summary
- Upload receipts
- Invoice status
- Payment reminder

## SCHEDULE MANAGEMENT

- View bookings and confirm
- Access booking summary details (location, accommodation, bill rate, paid status etc.)
- calendar management
- contacts listing

## ALERTS & NOTIFICATION

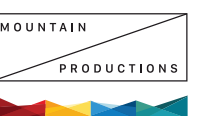
- Broadcast messages
- Push notification services
- Reminder alerts

## INTEGRATION & ACCESSABILITY

- Mobile and web access
- Social media integration
- CRM integration
- Secure transaction of data



DISTRIBUTED BY:





USE  
CASES

Culinary, UFC, Solheim Cup

DISTRIBUTED BY:



Z Y T E R

# SOLHEIM CUP

## REALTIME DATA

- team scores / match scores
- player stats / profiles
- current hole
- weather conditions
- event information – schedules, venues, virtual course guide

## COLLABORATION

- social media integration
- real-time collaboration – channels / group chats
- share pictures / videos
- calendar integration (events / schedules)

## USER ENGAGEMENT

- user registration
- alerts & notifications
- purchasing tickets / parking pass
- mobile wallet
- hospitality (book flights / hotels/ uber integration etc.)



## EVENT MANAGEMENT

- capture fan data (registration)
- real-time push notification
- broadcast messages
- vouchers & coupons

## ANALYTICS

- advertisement / marketing
- x-sell / up-sell
- data aggregation
- user analytics

## PROXIMITY SENSING

- golf course navigation
- interactive maps
- tracking players / holes
- integration with IOT device

DISTRIBUTED BY:





Z Y T E R

## UFC

## REGISTRATION

- Email verification
- Legal forms submission
- Secure document exchange w/ fighters, doctors, and commissions (Medical)
- eSign documents
- Streamlined registration e-forms. Dynamic and updatable from CMS
- Alerts & notifications

## USER ENGAGEMENT

- Profile updates
- Pre-fight checklist
- To-Do list
- Personalized calendar (fight schedule)
- View fight / bout information
- View agreements/contracts
- Group and channel based communication (AD, Event Ops, PR)
- View flight and hotel information



## UFC PERSONNEL

- Fighter directory
- Communication with fighters
- Broadcast messages
- View fighter schedule
- View pending items on fighter's "To-do list"

## MANAGEMENT ACTIVITIES

- Single-sign-on
- Fighter announcements (AD, PR)
- Forms verification & approval
- Push notifications (AD, Event Ops, PR)
- Workflow integration

DISTRIBUTED BY:

